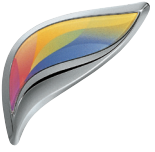


# SHARP

MX-4070N/MX-3570N/MX-3070N  
Digital Full Colour Multifunctional System



A3 COLOUR MFPs WITH  
ADVANCED FEATURES FOR  
CONNECTED TEAMS

Knowledge drives success /**This is Why** our MFPs optimise the way you create, manage and share information.

## You want to work smarter /This is Why you should empower your team with our next-generation technology.

The MX-4070N, MX-3570N and MX-3070N break new ground in office efficiency and ease of use. With advanced ergonomic design and forward-thinking connectivity, these next-generation machines are designed to perform right at the heart of your information infrastructure, reducing costs and optimising workflows.

### Empowering your team

Whichever model you choose - 40, 35 or 30 pages per minute - our smart technology will help everyone in your team work the way they want to.

An advanced Single Sign-On capability improves productivity by connecting people to their favourite Cloud storage services such as Google Drive™, SharePoint® and OneDrive®, direct from the control panel. Printing directly from the Cloud and scanning documents from the MFP up to the Cloud takes just moments. Sign on once, access everything!

### Smarter technology

The MX-4070N, MX-3570N and MX-3070N are packed full of the features you need for maximum productivity. As you approach it, a motion sensor will detect you and the MFP will awake from sleep mode, ready to process any jobs with no waiting at all.

A large, colour touch screen that tilts for easy viewing gives you intuitive access to every function, with an embedded 'quick help' guide to illustrate each step.

The screen lets you drag and drop menu icons for faster access to your frequently used functions and supports multi-touch pinch and spread gestures. A preview function enables easy viewing and editing of documents prior to printing.

MOTION SENSOR WAKES THE MFP WHEN SOMEONE APPROACHES, SO IT IS ALWAYS READY



HOME PAGE WITH EASY DRAG & DROP STYLE CUSTOMISATION



## Time is often limited /This is Why our MFPs are designed to do so much more.

All MFPs can print, copy and scan. But your next generation MX-4070N, MX-3570N or MX-3070N will do so much more. It can act as a print server to give you 'Pull Printing' capability. That means you can use the convenient Print Release feature to print your documents at any Sharp MFP that's on your network.\*

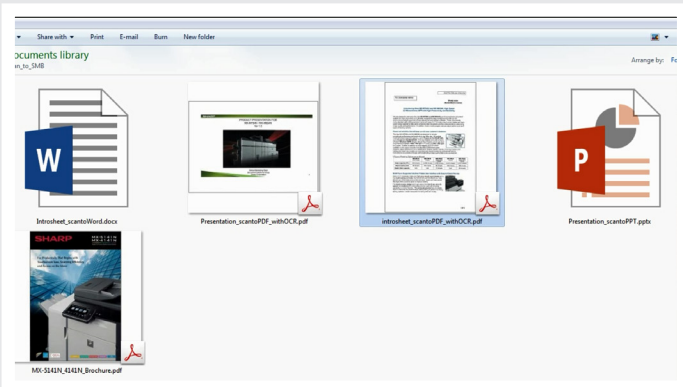
Not only does this ensure confidentiality because your documents are never left unattended, but it adds convenience by eliminating the need to carry piles of paper around with you.

### First class scanning

Scanning is very fast at 200 impressions per minute and the Auto Colour Mode lets you process mixed batches of colour and black & white documents automatically, even if they are of different sizes and weights. Just stack them in the 150-sheet feeder and let the MFP do the rest.

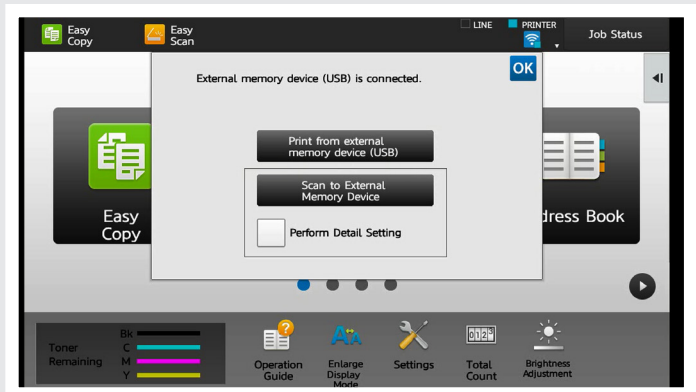
A powerful Optical Character Recognition feature enables you to scan your document in a range of formats including fully searchable PDF files as well as editable Microsoft Office format such as Word, PowerPoint or Excel. The need to re-type documents that you only have in hard copy is completely eliminated whilst ease of accessing and finding information is vastly improved.

If you have Microsoft Office files on a USB memory stick you can simply plug into the MFP, select your files and start printing. Scanning to the memory stick, or to the Cloud or for immediate output, is just as easy.



CONVERT SCANNED DOCUMENTS INTO EDITABLE OFFICE FILES AND SEARCHABLE PDFS WITH OCR

SIMPLY PLUG YOUR USB MEMORY STICK INTO THE MFP AND START PRINTING



\* The Print Release function can be used from any of five network-connected printers.



## You focus on results not technology /This is Why our MFPs support the way you like to work.

Flexibility in document handling means greater versatility in your output. Paper trays accommodate up to SRA3 media with weights up to 300 gsm. And you can choose from a wide range of finishing options including saddle-stitching, manual and stapleless stapling.

### Excellence comes as standard

All three models produce rich, vibrant colour with 1200 x 1200 dpi resolution, and our Auto Process Control and 'developer refresh' system guarantee page after page of consistently excellent output.

### Made for a mobile world

Work anywhere at any time. Sharpdesk Mobile lets everyone in your team print from and scan to their phones and tablets over your wireless network, and you can print from any App which supports Google Cloud Print.\* Industry leading security features keep your data and network safe and secure.

### Energy efficient

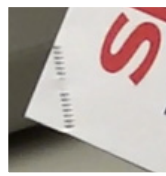
Low melt toner, configurable and automatic power on/off settings, Eco Scan and a shorter warm up time are just some of the many features that ensure extremely low energy consumption.

In addition, the front panel display will prompt users to select the most environmentally friendly option before starting a job and the toner cartridge automatically ejects only when the toner has been fully exhausted, eliminating waste.

### Tough security

When you make your MFP and all the documents in your Cloud available to everyone, you'll want to know that they are safe and secure. So you'll be pleased to know that our latest MFPs come with all the security features of our earlier models, plus S/MIME for secure email communications, advanced data protection and high security logins and user authentication.

MANUAL STAPLING  
FOR UP TO 40  
SHEETS (80 GSM)



STAPLELESS STAPLING  
IS AVAILABLE FOR UP  
TO 4 SHEETS OF PAPER

\* Not available in every country.

## Effective teams need efficient technology /This is Why our next-generation MFPs are optimised for productivity.

The smart technology of the MX-4070N, MX-3570N and MX-3070N will transform the productivity of any workgroup. Your whole team will find that printing, copying, scanning and finishing documents is fast, easy and efficient. But that's just the start.

If you couple one of these next-generation MFPs with Cloud Portal Office and one or more of our Optimised Software Solutions, you'll see productivity elevated to an even higher level.

### Cloud Portal Office

Cloud Portal Office is our award-winning business class collaboration service which connects phones, tablets, PCs, Sharp MFPs and our BIG PAD interactive whiteboard in a single, seamless information environment.

When enabled on one of these new MFPs, everyone gets on-demand, walk-up access to every document that's stored in your own private Cloud. Just log on at the control panel, browse and print. You can also scan automatically indexed documents directly to a folder in the Cloud, and send email alerts to colleagues who need them, all from the MFP.

### Optimised Software Solutions

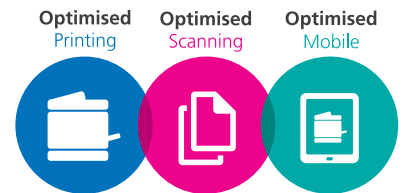
We created our range of Optimised Software Solutions to help you reduce costs, increase efficiency and improve security.

Our **Optimised Scanning Solutions** save time and prevent costly errors by simplifying and automating the capture, storage and sharing of documents, regardless of their format or purpose.

Our **Optimised Printing Solutions** help you monitor and manage your print and copy usage, so you can eliminate unauthorised use, track and recover costs and reduce waste.

Our **Optimised Mobile Solutions** help people to connect tablets, phones and laptops simply and securely, so they're always in touch.

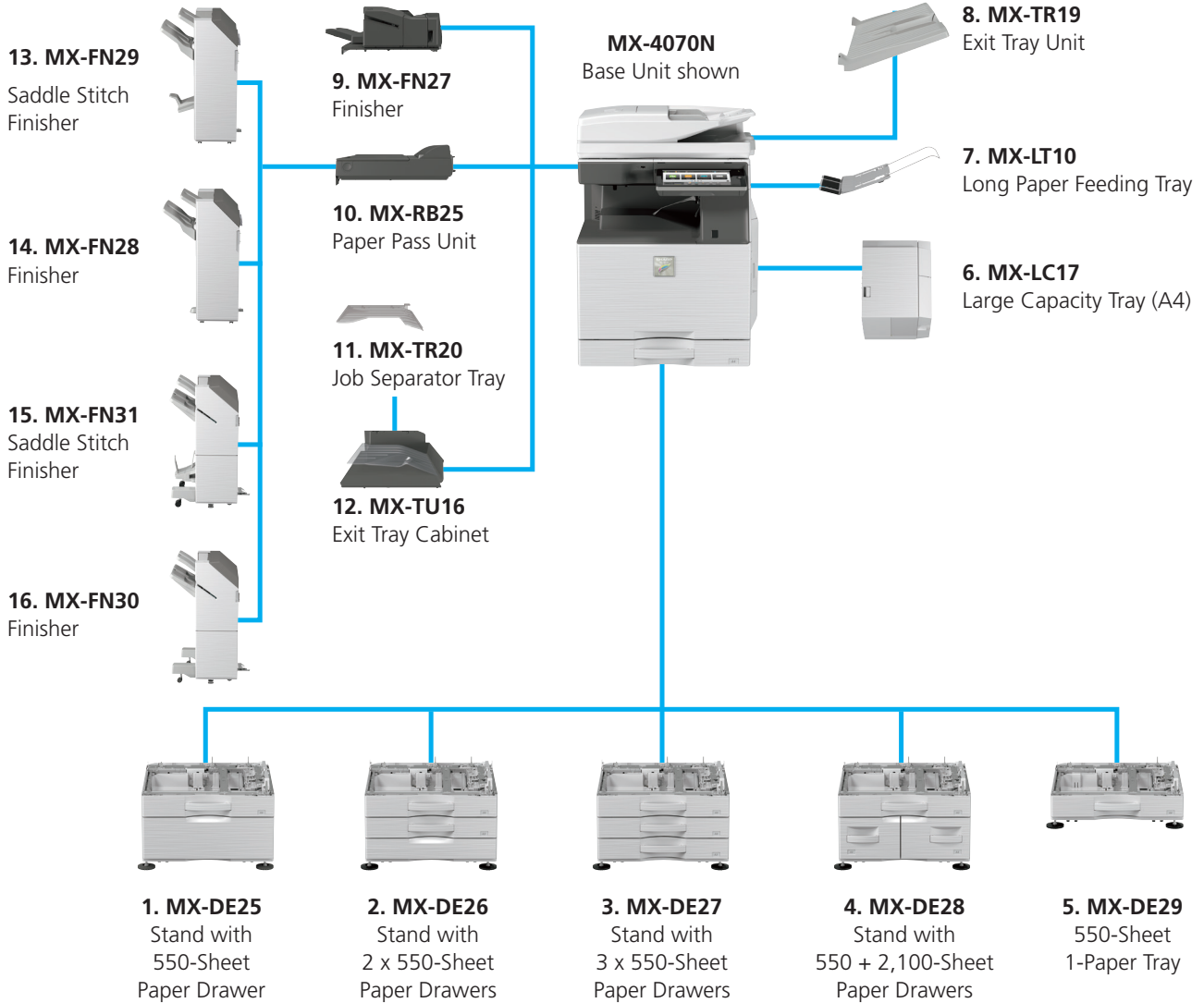
All these plus the power of the MX-4070N/MX-3570N/MX-3070N will enable you to optimise your workforce productivity and enhance your profitability.



CLOUD READY MFP  
AND OPTIMISED  
SOFTWARE  
SOLUTIONS



# Configuration Examples



MX-4070N Base Unit  
Exit Tray Cabinet Unit  
Stand with 550-Sheet Paper Drawer



MX-4070N Base Unit  
Inner Finisher  
Exit Tray Unit  
Stand with 3 x 550-Sheet Paper Drawers



MX-4070N Base Unit  
Stand with 550 + 2,100-Sheet Paper Drawers  
Saddle Stitch Finisher + Paper Pass Unit  
Exit Tray Unit  
Large Capacity Tray

## Base Unit

### 1. MX-DE25 Stand with 550-Sheet Paper Drawer

550 sheets\*<sup>1</sup>, SRA3 to A5R (60 - 300 g/m<sup>2</sup>)

### 2. MX-DE26 Stand with 2 x 550-Sheet Paper Drawer

550 sheets each\*<sup>1</sup> for lower and upper trays, SRA3 to A5R (60 - 300 g/m<sup>2</sup>)

### 3. MX-DE27 Stand with 3 x 550-Sheet Paper Drawer

550 sheets each\*<sup>1</sup> for lower and upper trays, SRA3 to A5R (60 - 300 g/m<sup>2</sup>)

### 4. MX-DE28 Stand with 550 + 2,100-Sheet Paper Drawer

Upper tray: SRA3 – A5R, 550 sheets (80 g/m<sup>2</sup>)

Lower tray (Left): A4, 1,200 sheets (60 - 105 g/m<sup>2</sup>)

Lower tray (Right): A4 - B5, 900 sheets (60 - 105 g/m<sup>2</sup>)

### 5. MX-DE29\*<sup>2</sup> 550-Sheet 1-Paper Tray

550 sheets\*<sup>1</sup>, SRA3 to A5R (60 - 300 g/m<sup>2</sup>)

### 6. MX-LC17\*<sup>2</sup> Large Capacity Tray (A4)

3,000 sheets\*<sup>1</sup>, A4 - B5 (60 - 220 g/m<sup>2</sup>)

## Finishing

### 7. MX-LT10 Long Paper Feeding Tray

Recommended for banner printing

### 8. MX-TR19 Exit Tray Unit

### 9. MX-FN27 Inner Finisher

A3 - B5 (offset/staple), SRA3 - A5R (non offset)

Offset tray (upper): max. 500-sheet paper capacity\*<sup>1</sup>

Stapling capacity: max. 50-sheet multi-position staple\*<sup>1</sup>

Staple position: 3 locations (front, rear or 2 point stitching)

Manual Stapling: 1-point at rear (Flat), 45 sheets (64 g/m<sup>2</sup>),

40 sheets (80 g/m<sup>2</sup>)

Stapleless capacity: max.5-sheet (64 g/m<sup>2</sup>), 4 sheet (65 – 81.4 g/m<sup>2</sup>),

3 sheet (81.5 - 105 g/m<sup>2</sup>)

Stapleless position: 1-point at rear (Slant), A3 - B5

### Optional Punch Module for MX-FN27:

**MX-PN14C - 2/4 Hole Punch Module**

**MX-PN14D - 4 Hole Wide Punch Module**

### 10. MX-RB25 Paper Pass Unit

Required when using MX-FN28, MX-FN29, MX-FN30 & MX-FN31

### 11. MX-TR20 Job Separator Tray

Requires MX-TU16 Exit Tray Cabinet

### 12. MX-TU16 Exit Tray Cabinet

### 13. MX-FN29 1k Saddle Stitch Finisher

A3W - A5R (offset/staple), SRA3 - A5R (non offset)

Offset tray (upper): max.1,000-sheet paper capacity\*<sup>1</sup>

Stapling capacity: max. 50-sheet multi-position staple\*<sup>1</sup>

Staple position: 1-point at front (Flat), 1-point at back (Flat),

2 point stitching)

Saddle stitch tray (lower): 7 sets (11-15 sheets), 10 sets (6-10 sheets),

20 sets (1-5 sheets). 15 sheets max per set

### 14. MX-FN28 1k Finisher

A3W - A5R (offset/staple), SRA3 - A5R (non offset)

Offset tray (upper): max.1,000-sheet paper capacity\*<sup>1</sup>

Stapling capacity: max. 50-sheet multi-position staple\*<sup>1</sup>

Staple position: 1-point at front (Flat), 1-point at back (Flat),

2 point stitching)

### Optional Punch Module for MX-FN29 & MX-FN28:

**MX-PN15C - 2/4 Hole Punch Module**

**MX-PN15D - 4 Hole Wide Punch Module**

### 15. MX-FN31\*<sup>2</sup> 3k Saddle Stitch Finisher

A3 - B5 (offset/staple), SRA3 - A5R (non offset)

Offset tray (upper): max.3,000-sheet paper capacity\*<sup>1</sup>

Stapling capacity: max. 65-sheet multi-position staple\*<sup>1</sup>

Staple position: 1-point at front (Slant), 1-point at back (Slant), 2 point stitching)

Manual Stapling: 1-point at rear (Flat), 45 sheets (64 g/m<sup>2</sup>),

40 sheets (80 g/m<sup>2</sup>)

Stapleless capacity: max.5-sheet (64 g/m<sup>2</sup>), 4 sheet (65 – 81.4 g/m<sup>2</sup>),

3 sheet (81.5 - 105 g/m<sup>2</sup>)

Stapleless position: 1-point at rear (Slant), A3 - B5

Saddle stitch tray (lower): 10 sets (11-15 sheets),

15 sets (6-10 sheets), 25 sets (1-5 sheets). 20 sheets max per set

### 16. MX-FN30\*<sup>2</sup> 3k Finisher

A3 - B5 (offset/staple), SRA3- A5R (non offset)

Offset tray (upper): max.3,000-sheet paper capacity\*<sup>1</sup>

Stapling capacity: max. 65-sheet multi-position staple\*<sup>1</sup>

Staple position: 1-point at front (Slant), 1-point at back

(Slant), 2 point stitching)

Manual Stapling: 1-point at rear (Flat), 45 sheets (64 g/m<sup>2</sup>),

40 sheets (80 g/m<sup>2</sup>)

Stapleless capacity: max.5-sheet (64 g/m<sup>2</sup>), 4 sheet (65 – 81.4 g/m<sup>2</sup>),

3 sheet (81.5 - 105 g/m<sup>2</sup>)

Stapleless position: 1-point at rear (Slant), A3 - B5

### Optional Punch Module for MX-FN31 & MX-FN30:

**MX-PN16C - 2/4 Hole Punch Module**

**MX-PN16D - 4 Hole Wide Punch Module**

## Printing

### MX-PF10 Barcode Font Kit

Enables barcode printing

## Faxing

### MX-FX15 Fax Expansion Kit

### MX-FWX1 Internet Fax Expansion Kit

## Scanning

### AR-SU1 Stamp Unit

Marks already scanned documents for checking

## Sharpdesk Licenses

### MX-USX1/X5

1/5-License Kit

### MX-US10/50/A0

10/50/100-License Kit

## Sharp OSA®

### MX-AMX1 Application Integration Module

## Security

### MX-FR52U\*<sup>2</sup> Data Security Kit

Commercial Version

\*<sup>1</sup> Number of sheets based on 80 g/m<sup>2</sup>. \*<sup>2</sup> Available at a later date.

# Specifications

## General

<b>Engine speed</b> (ppm/cpm) (Max)	<b>A4*1</b>	<b>A3</b>	<b>SRA3</b>
	40	20	18
	35	18	16
	30	16	15
<b>Control panel display</b>	10.1-inch colour LCD touchscreen		
<b>Paper size</b> (Min – Max)	SRA3 – A5*2		
<b>Paper weight</b> (g/m <sup>2</sup> )			
Tray	60 - 300		
Multi-bypass	55 - 300		
<b>Paper capacity</b> (Std – Max)			
Sheets	650 - 6,300		
Drawers	1 - 4 (plus bypass tray)		

<b>Warm-up time*3</b> (seconds)	10
<b>Memory</b> (GB)	
Copier/Printer (shared)	5
HDD*4	500
<b>Power requirements</b>	Rated local AC voltage $\pm 10\%$ , 50/60 Hz
<b>Power consumption</b> (kW) (Max)	1.84 (220 to 240V)
<b>Dimensions</b> (mm) (W x D x H)	615 x 660 x 838
<b>Weight</b> (kg)	87

## Copier

<b>Original paper size</b> (Max)	A3	
<b>First copy time*5</b>	<b>Full colour</b>	<b>B/W</b>
	6.7	4.7
<b>Continuous copies</b> (Max)	9,999	
<b>Print resolution</b> (dpi)		
Scan (colour)	600 x 600	
Scan (B/W)	600 x 600, 600 x 400	
Print	1,200 x 1,200, 600 x 600, 9,600 (equivalent) x 600 (depending on copy mode)	
<b>Gradation levels</b>	256	
<b>Zoom range</b> (%)	25 – 400, (25 – 200 using DSPF) in 1% increments	
<b>Preset copy ratios</b> (Metric)	10 ratios (5R/5E)	

## Network Scanner

<b>Scan method</b>	Push scan (via control panel) Pull scan (TWAIN-compliant application)
<b>Scan speed*6</b>	One-sided: Max. 100 originals/min. Two-sided: Max. 200 originals/min.
<b>Resolution</b> (dpi) (Max)	
Push scan	100, 150, 200, 300, 400, 600
Pull scan	75, 100, 150, 200, 300, 400, 600 50 to 9,600 dpi via user setting
<b>File formats</b>	TIFF, PDF, PDF/A, encrypted PDF, compact PDF, JPEG*7, XPS, searchable PDF, Microsoft® Office (pptx, xlsx, docx), text (TXT), rich text (RTF)
<b>Scan destinations</b>	Scan to e-mail, desktop, FTP server, network folder (SMB), USB memory, HDD
<b>Scanner utilities</b>	Sharpdesk

## Wireless LAN

<b>Compliant regulation</b>	IEEE802.11n/g/b
<b>Access mode</b>	Infrastructure mode, Software AP mode
<b>Security</b>	WEP, WPA/WPA2-mixed PSK, WPA/WPA2-mixed EAP*8, WPA2 PSA, WPA2 EAP*8

## Document Filing

<b>Document filing capacity*9</b>	<b>Pages</b>	<b>Files</b>
Main & custom folders	20,000	3,000
Quick file folder	10,000	1,000
<b>Stored jobs*10</b>	Copy, print, scan, fax transmission	
<b>Storage folders</b>	Quick file folder, main folder, custom folder (max. 1,000)	
<b>Confidential storage</b>	Password protection (for main & custom folders)	

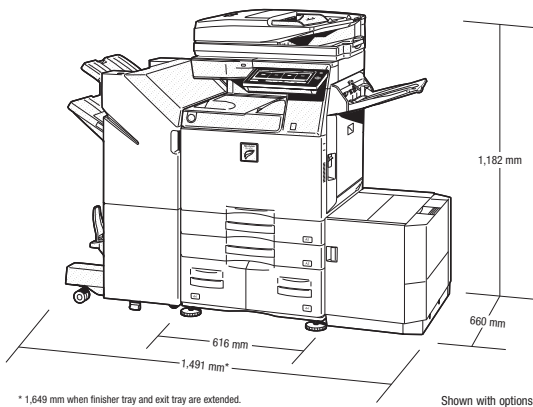
## Network Printer

<b>Resolution</b> (dpi)	1,200 x 1,200, 600 x 600, 9,600 (equivalent) x 600
<b>Interface</b>	USB 1.1, USB 2.0, 10Base-T/100Base-TX/1000Base-T
<b>Supported OS</b>	Windows Server® 2008, 2008R2, 2012, 2012R2, Windows Vista®, Windows® 7, 8, 8.1, Mac OS X 10.4, 10.5, 10.6, 10.7, 10.8, 10.9, 10.10
<b>Network protocols</b>	TCP/IP (IPv4, IPv6)
<b>Printing protocols</b>	LPR, Raw TCP (port 9100), POP3 (e-mail printing), HTTP, FTP for downloading print files, IPP
<b>PDL</b>	PCL 6 emulation, Adobe® PostScript®3™
<b>Available fonts</b>	80 fonts for PCL, 139 fonts for Adobe PostScript 3

## Fax (optional MX-FX15 required)

<b>Compression method</b>	MH/MR/MMR/JBIG
<b>Communication protocol</b>	Super G3/G3
<b>Transmission time*11</b> (seconds)	Less than 3
<b>Modem speed</b> (bps)	33,600 – 2,400 with automatic fallback
<b>Transmission resolution</b> (dpi)	203.2 x 97.8 (Std) / 406.4 x 391 (Ultra Fine)
<b>Recording width</b>	A3 – A5
<b>Memory</b> (GB)	1 (built-in)

## Configurations



## Notes



\*1 Long-edge feeding. \*2 Only short-edge feeding can be used with A5 paper. \*3 At rated voltage, 23°C (73.4°F). May vary depending on operating conditions and environment. \*4 HDD capacity depends on procurement and sourcing status. \*5 Long-edge feeding of A4 sheets from 1st paper tray, using document glass, without Auto Colour Selection and Auto Colour mode, MFP in fully ready condition. May vary depending on operating conditions and environment. \*6 Based on Sharp's A4 standard chart, using document feeder and long-edge feeding. Using factory default settings with Auto Colour Selection off. Scan speed will vary depending on the type of document and the scan settings. \*7 Colour only. \*8 Not applicable to Software AP mode. \*9 Storage capacity will vary depending on the type of document and the scan settings. \*10 Some features require option(s). \*11 Based on Sharp's standard chart with approx. 700 characters (A4 long-edge feeding) at standard resolution in Super G3 mode, 33,600 bps, JBIG compression

Design and specifications are subject to change without prior notice. All information was correct at time of print. The ENERGY STAR logo is a certification mark and may only be used to certify specific products that have been determined to meet the ENERGY STAR programme requirements. ENERGY STAR is a US registered mark. Windows, Windows NT, Windows XP and Windows Vista are registered trademarks of Microsoft Corporation. Adobe and PostScript 3 are either registered trademarks or trademarks of Adobe Systems Incorporated in the U.S. and/or other countries. All other company names, product names and logotypes are trademarks or registered trademarks of their respective owners. ©Sharp Corporation January 2016. Ref: MX-M4070N/MX-M3570N/MX-M3070 Job: (16859). All trademarks acknowledged. E&OE.

# SHARP

Inspiring ideas from technology

www.sharp.eu