

# SHARP

MX-7500N / MX-6500N  
Advanced Colour Printing System



HIGH PERFORMANCE  
COLOUR PRINTING



You want the greatest return from your investment **/This is Why** our advanced colour systems offer unique features combined with unrivalled productivity.



## You need an in-house print resource you can depend on. **/This is Why** our MX-6500 and MX-7500 are all about reliability, flexibility and quality.

### A winning combination of speed and power

The Sharp MX-6500N and MX-7500N colour printing systems offer exceptional productivity and state-of-the-art document quality at print and copy speeds of 65 and 75ppm. Suitable for busy departments, special office areas requiring top quality professional output or the demands of a printroom or CRD, these machines combine the ease of use of an office MFP with robust reliability expected from these environments.

Advanced technology, integrated network scanning, and flexible configurations expedite job processing and streamline document workflow like never before. And to bring productivity and reliability where and when it's needed most, this high-volume workhouse boasts a 1TB hard disk and 5GB of standard memory.

### Class-leading Innovation

In addition to its best-in-class feeding technology for reliable and fast feeding of a wide variety of media, the MX-6500N and MX-7500N have the unique ability to print right to the top and bottom edges of standard A3 paper, so that only the lead and trail edge void areas need to be trimmed for a full-bleed effect. This feature allows production of full-bleed A4 size booklets – a format frequently used for many types of customer facing documents from brochures, pamphlets, individual catalogues to annual reports.

Using the full-bleed feature with either of the Saddle Stitch Finishers with trim options available, enables users to automatically create high-quality, professional looking booklets in-line – as easily and quickly, helping to reduce both outsourcing costs and production times.

### High quality colour processing

1200 x 1200 dpi with 8-bit processing ensures exceptionally fine screening, smooth shades and colour gradients, as well as crystal-clear text and graphics.

### Colour Consistency System

Sharp's colour Consistency System combines Micro-fine Toner Technology with advanced Developer Refresh Technology and next generation Image Process Control. This synergy of processes helps ensure colour output is always at peak performance.



## Every day brings new challenges / **This is Why** we give you the flexibility to do more.

An impressive range of paper input and document finishing options, lets your organisation produce a huge variety of jobs. What's more, the modular design means that the configuration you specify today can be easily upgraded if your needs change in the future.

The standard paper supply for example, starts at 3,100 sheets but this can easily be expanded for longer uninterrupted print runs for maximum productivity.

From B5 through to 13" x 19.2" (330.2mm x 487.7mm), from 60 to 300gsm and on plain, coated or textured stock; it all gets fed smoothly and reliably from the optional air-fed large capacity tray. What's more, you can replenish paper supply without interrupting the print run.

### **Extensive finishing options**

The flexible media handling capabilities of the MX-6500N and MX-7500N are supported by one of the industry's widest range of finishing options to let your organisation produce a wide range of professionally finished jobs.

Stapling, advanced hole punching, a variety of fold options and document insertion are available as in-line options in addition to the afore-mentioned saddle-stitching and trim options.

It all adds up to total productivity and professional output for the best possible return on your investment.



# You need professional quality print to be simple and affordable /This is Why our advanced features are so easy to use.

Operation has never been so intuitive or easy. The control panel on the MX-6500N and MX-7500N features a clear, wide 15.4" WSVGA touchscreen. With its user-friendly operation and easy customisation, this high resolution screen boosts productivity to the next level.

This is supported by an optional full-size retractable QWERTY keyboard slides out from beneath the control panel to make text input fast, easy and convenient.

### Powerful and Capable

With the standard integral print controller on the MX-6500N and MX-7500N you will benefit from an easy to use, extremely capable and fast RIP that lets you print large and complex documents quickly and with excellent colour accuracy. Genuine Adobe® Postscript® 3 is standard to support advanced graphic applications and Pantone Licensing offers unprecedented levels of colour fidelity to the Pantone Matching System®.

As well as entry-level colour management and simplified print job programming, you'll benefit from easy-to-master colour management tools and controls for rendering intents, output profiles, screening and CMYK correction.

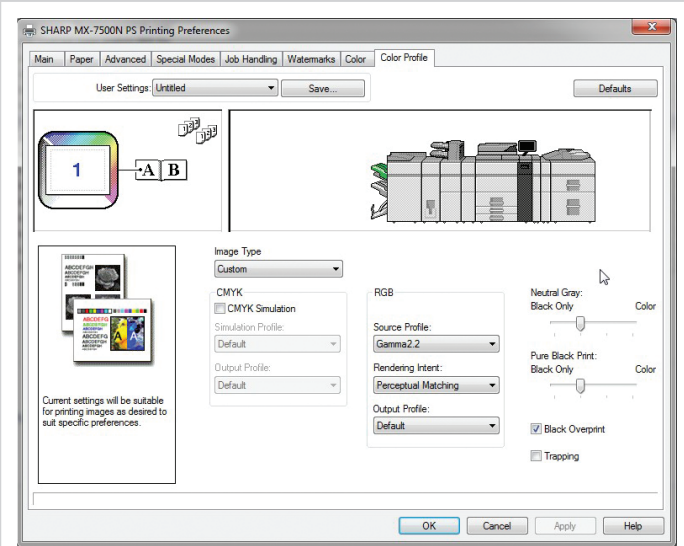
Advanced colour control features include auto trapping, standard and customer ICC profiles, RGB to CMYK colour conversion controls. And it's easy for anyone to adjust RGB colour balance as well as image brightness, contrast and saturation.

### Mycrostoner-HG3

Third-generation Mycrostoner-HG3 (High Grade) expands the colour reproducibility range for a more natural rendering of clear blue skies, emerald green oceans and other colour images. And the smaller particle size of the toner and carrier allows for reduced graininess and clear reproduction of fine lines, fine text, and halftone colours.

### Optional MX-PE10 Fiery Colour Print Server

Easily manage jobs with the optional Fiery® Command Workstation® full integrated at the Sharp control panel. Eliminates the need for the additional FACI kit or PC.





## We believe in environmental responsibility /This is Why we're working to consume fewer natural resources.

### Supporting your environmental objectives

Clearly, all production-class printing systems are designed for high volume work. But that doesn't mean they have to consume unreasonable amounts of natural resources. Like all Sharp printing systems, the MX-7500N and MX-6500N have been designed and engineered to be as environmentally friendly as possible.

LED lights in the scanner and fast warm up times save time and money. Plus, a special Eco Scan Mode switches the fuser off whenever appropriate.

The Pro Series colour document systems use Sharp's advanced micro-fine toner technology, which offers a lower consumption rate and produces less waste than conventional toners, resulting in longer replacement intervals.

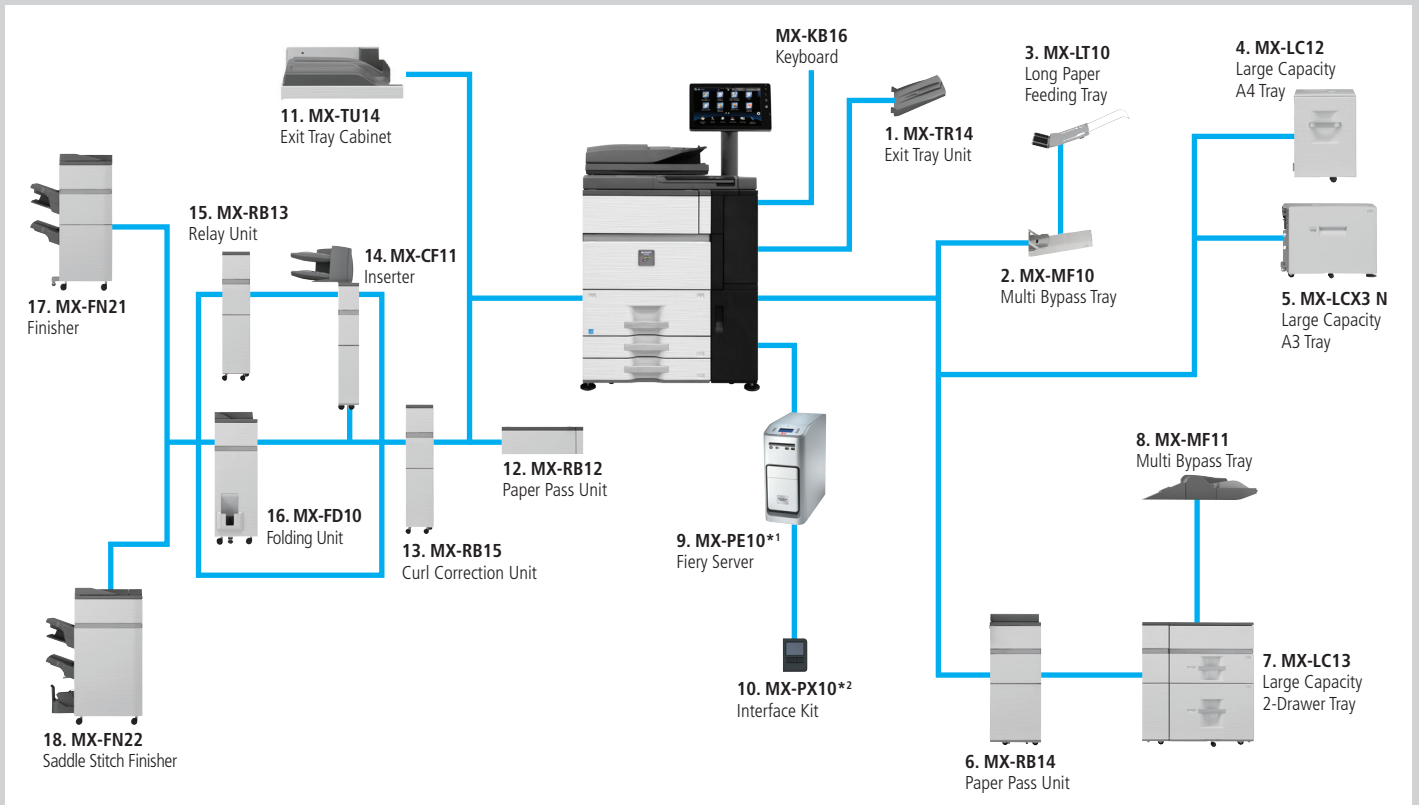
Sharp supplies are packaged using fully recyclable materials. Long-life consumable parts help minimise service intervals and downtime, resulting in lower operation costs. With two different energy saving modes, power can be reduced or shut off at set intervals. All Sharp document systems are ENERGY STAR® certified.

### Global initiatives

Sharp is committed to environmental sustainability and corporate responsibility including planning, design, manufacturing, distribution and product end-of-life management.



## Options & Configuration Examples



### MX7500: FN21

- 65 or 75 pages per minute printing performance
- 3100 sheets paper (A4) capacity
- Stack up to 4,000 sheets paper
- Staple up to 100 sheets



### MX7500: FN22 LCX3

- 100 sheet stapling and 20 sheets (80 pages) booklet-making
- Optional trimmer to achieve full bleed booklets
- Optional integral 2 or 4 hole punch
- Fast warm up time



### MX7500: FN22 LC13

- Two x 2,500 sheet large capacity paper deck increases paper capacity to 8,000
- Optional 500 sheet Bypass tray
- 7 input trays allows for a variety of types, sizes and weights to be continually available
- Reliable triple-air feeding of coated, uncoated and textured media
- Feeds media B5 up to 13" x 19.2" (330.2 x 487.7mm)
- Refill paper and toner without interrupting printing



## MX-KB16 Keyboard

### 1. MX-TR14 Exit Tray Unit

### 2. MX-MX10 Multi Bypass Tray (for main machine)

- A5R up to 13" x 19.2"
- 100 sheets (80gsm)
- 55 – 300gsm

### 3. MX-LT10 Long Paper Feeding Tray

- Width 90 – 305mm
- Length 489 – 1,200mm

### 4. MX-LC12 Large Capacity Tray

- A4 – B5
- 3,500 sheets (80gsm)
- 60 – 220gsm

### 5. MX-LCX3N Large Capacity Tray

- A3-A4R
- Also supports 13" x 19.2" (80gsm)
- 60 – 220gsm

### 6. MX-RB14 Paper Pass Unit

### 7. MX-LC13 Large Capacity Tray (2 drawers)

- SRA3 – A5R
- Also supports 13" x 19.2" (80gsm)
- 55 – 300gsm

### 8. MX-MF11 Multi Bypass Tray (for MX-LC13)

- 500 sheets (80gsm)
- 55 – 220gsm

### 9. MX-PE10DE Fiery Server

### 10. MX-PX10 Interface Kit

### 11. MX-TU14 Exit Tray Cabinet

### 12. MX-RB12 Paper Pass Unit (for main machine)

### 13. MX-RB15 Curl Correction Unit

### 14. MX-CF11 Inserter

- 2 bin x 200 sheets (80gsm)
- SRA3 – A5R
- 60 – 220gsm

### 15. MX-RB13 Relay Unit

### 16. MX-FD10 Folding Unit

- Z-fold, Half-fold: A3 to A4 (55-105gsm)
- C-fold, Accordion-fold, Double-fold: A4 (55-105gsm)

### 17. MX-FN21 Finisher

- 4,250 output (A4)
- 1,625 (A3/SRA3)
- Staple 100 sheets (A4)
- 50 sheets (A3, B4)

### 18. MX-FN22 Saddle Stitch Finisher

- 20 sheet saddle-stitch

### 19. MX-TM10 Trimmer (for MX-FN22)

- 2mm up to 20mm trim width; 60 – 300gsm

# Specifications

## General

A4 Engine speed (ppm) (Plain / Coated) (Max)	MX-7500N	MX-6500N
52 – 105 g/m <sup>2</sup>	75 / 75	65 / 65
106 – 220 g/m <sup>2</sup>	38 / 38	38 / 38
221 – 300 g/m <sup>2</sup>	30 / 30	30 / 30

A3 Engine speed (ppm) (Plain / Coated) (Max)	MX-7500N	MX-6500N
52 – 105 g/m <sup>2</sup>	42 / 42	38 / 38
106 – 220 g/m <sup>2</sup>	23 / 23	23 / 23
221 – 300 g/m <sup>2</sup>	18 / 18	18 / 18

SRA3 Engine speed (ppm) (Plain / Coated) (Max)	MX-7500N	MX-6500N
52 – 105 g/m <sup>2</sup>	40 / 40	36 / 36
106 – 220 g/m <sup>2</sup>	22 / 22	22 / 22
221 – 300 g/m <sup>2</sup>	17 / 17	17 / 17

Paper weight (g/m <sup>2</sup> ) (Min – Max)	
Drawer 1 & 2	60 – 105
Drawer 3 & 4	60 – 220
MX-MF10	55 – 300
MX-MF11	55 – 220
MX-LC12	60 – 220
MX-LCX3 N	60 – 220
MX-LC13	55 – 300

Paper size (Min – Max)	
Drawer 1 & 2	A4
Drawer 3	B5R – A3W
Drawer 4	A5R – A3W
MX-MF10/MX-MF11	A5R – SRA3 (also supports 13" x 19.2")
MX-LC12	B5 – A4
MX-LCX3 N	B5 – A3W (also supports 13" x 19.2")
MX-LC13	B5 – SRA3 (also supports 13" x 19.2")

## Copier

<b>Original paper size (Max)</b>	A3	
<b>First copy time** (seconds)</b>	Colour	B/W
MX-7500N	5.1	3.7
MX-6500N	5.6	4.0
<b>Continuous copies (Max)</b>	9,999	
<b>Resolution (dpi)</b>	600 x 600, 9600 (equivalent) x 600	
Print (Colour)	1200 x 1200, 600 x 600, 9600 (equivalent) x 600	
Print (B/W)		
<b>Gradation levels</b>	256	
<b>Zoom range (%)</b>	25 – 400 (25 – 200 using DSPF) in 1% increments	
<b>Preset copy ratios</b>	10 (5R/5E)	

## Network Printer

<b>Resolution (dpi)</b>	600 x 600, 1200 x 1200, 9,600 (equivalent) x 600	
<b>Interface</b>	USB2.0, 10Base-T / 100Base-TX / 1000Base-T	
<b>Supported OS</b>	Windows® XP, Windows Server® 2003/2008/2008R2/2012, Windows Vista®, Windows® 7, Windows® 8 Mac OS X 10.4, 10.5, 10.6, 10.7, 10.8	
<b>Network protocols</b>	TCP/IP (IPv4 & IPv6), IPX/SPX (Netware), EtherTalk (AppleTalk)	
<b>Printing protocols</b>	LPR, Raw TCP (port 9100), POP3 (e-mail printing), HTTP, Novell Printserver application with NDS and Bindery, FTP for downloading print files, EtherTalk printing, IPP	
<b>PDL</b>	Std Opt	PCL6, Genuine Adobe® PostScript® 3™ XPS*3
<b>Available fonts</b>	PCL Genuine Adobe® PostScript® 3™	80 136

Paper input capacity (Min – Max)	
A4	3,100 – 13,500
A3	1,000 – 11,500
SRA3	100 – 10,500

Paper output capacity (Min – Max)	
A4 / A3 / SRA3	250 – 10,500

<b>Warm-up time*1 (seconds)</b>	90
---------------------------------	----

<b>Duplex</b>	Std
---------------	-----

Memory	
Copier/Printer (shared)	5 GB
HDD	1 TB

<b>Power requirements</b>	220 to 240V/8A, 50/60Hz (10A plug x 2)
---------------------------	--

<b>Power consumption (kW) (Max)</b>	3.84
-------------------------------------	------

<b>Dimensions (mm) (W x D x H)</b>	982 x 768 x 1,530
------------------------------------	-------------------

<b>Weight (kg)</b>	228.1
--------------------	-------

## EFI Fiery Controller (optional MX-PE10)

<b>Resolution (dpi)</b>	1200 x 1200, 600 x 600 (PS)
<b>Interface</b>	Gigabit Ethernet On Board
<b>Supported OS</b>	Windows XP (32/64bit), Vista (32/64bit), 7, Server2003 (R2:32bit, SP1:64bit), Server 2008 (32bit, RC2:64bit) MAC OS10.5 (PowerPC, Intel), 10.6(Intel), 10.7(Intel)
<b>Network protocols</b>	TCP/IP, IPX iPrint, LDAP
<b>Printing protocols</b>	LPD (TCP/IP network , LPR protocol) PServer (Netware networks, Bindery and NDS mode, NDPS support) RPRINT(not supported, Netware networks) PAP: (AppleTalk network) SMB: (Windows network over TCP/IP), Port9100 IPP1.1 Email Print (PS,PDF) Mac Bonjour, Apple Talk
<b>PDL</b>	Genuine Adobe® PostScript® 3™
<b>Available fonts</b>	136 Roman (PS3)

## Colour Network Scanner

<b>Scan method</b>	Push scan (via operation panel) Pull scan (TWAIN-compliant application)
<b>Resolution (dpi)</b>	Push scan Pull scan
	100, 150, 200, 300, 400, 600 75, 100, 150, 200, 300, 400, 600 50 - 9,600 via user setting
<b>File formats</b>	XPS**4, PDF, Encrypted PDF, Compact PDF**5, PDF/A-1b, JPEG (colour only), TIFF
<b>Scan destinations</b>	Scan to e-mail, FTP server, network folder (SMB), USB memory
<b>Scanner utilities</b>	Sharpdesk, Sharpdesk Mobile

## Document Filing

<b>Document filing capacity (pages/or files)</b>	
Main folder & Custom Folder	35,000**6 or 5,000
Quick file folder	10,000**6 or 1,000
<b>Stored jobs</b>	Copy, print, scan
<b>Storage folders</b>	Quick folder, main folder, custom folder (max.1,000)
<b>Confidential storage</b>	Password protection

## Notes

\*1 At rated voltage. May vary depending on machine conditions and operating environment. \*2 Best achieved time based on A4 copy, long-edge feeding from 1st paper drawer, using document glass, when machine is ready. May vary depending on machine conditions and operating environment. \*3 Requires optional MX-PDX1. \*4 To view XPS files on PCs not running Windows Vista, you must have the XPS View application installed. \*5 Requires optional MX-EB11. \*6 Measured using Sharps' standard chart (A4 with 6% coverage, B/W). Storage capacity will vary depending on the type of document and the scan settings.

Design and specifications are subject to change without prior notice. All information was correct at time of print. The ENERGY STAR logo is a certification mark and may only be used to certify specific products that have been determined to meet the ENERGY STAR programme requirements. ENERGY STAR is a US registered mark. Windows, Windows XP, Windows Server and Windows Vista are registered trademarks of Microsoft Corporation. Adobe and PostScript 3 are either registered trademarks or trademarks of Adobe Systems Incorporated in the U.S. and/or other countries. All other company names, product names, and logos are trademarks or registered trademarks of their respective owners. ©Sharp Corporation May 2015 Ref: Datasheet MX-7500N/MX-6500N. All trademarks acknowledged. E&OE.

# This is Why

[www.sharp.co.uk](http://www.sharp.co.uk)

# SHARP

DEALER STAMP

SHARP BUSINESS SYSTEMS UK PLC  
4 FURZEGROUND WAY  
STOCKLEY PARK  
UXBRIDGE  
MIDDLESEX UB11 1EZ  
TEL: +44 (0)20 8734 2000

