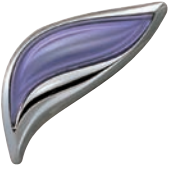


SHARP

MX-M1204/MX-M1054/MX-M904
Production Printing System



HIGH PERFORMANCE
SRA3 BLACK & WHITE
PRODUCTION MFP

We understand productivity /**This is Why** we're proud to put our name to these versatile high performance products.

Downtime is expensive /This is Why reliability comes as standard.

Letting document production equipment stand idle is expensive and wasteful. Deadlines pass by, opportunities are missed and frustrations rise. Maximum throughput is not just desirable, it's crucial.

Which is why, if you run a commercial print business or a corporate reprographics department, you need our MX-M1204, MX-M1054 or MX-M904.

Engineered for maximum, high-volume productivity and capable of sustained print and copy speeds of 90,105 and 120 pages per minute, they are our most powerful and resilient production systems ever.

Rugged durability

Consistently feeding paper at speeds of up to 120 ppm is a technical challenge. But maintaining that performance on a range of media through an array of inline finishing options - for hours at a time, day after day - takes real engineering talent. And that's what you'll find here.

The Large Capacity Trays feature our advanced triple air feed technology, for example, for smoother transportation of SRA3 and glossy stock. And in the event of a rare mis-feed, our multi-feed sensors will detect and diagnose the problem, helping the operator to clear it without delay.

The maximum paper capacity is a useful 13,500 sheets, the toner and the paper can be replenished without interrupting the print run, and other features such as Auto Tray Switching and long life developer reduce manual intervention still further.

Sustained productivity has never been easier.



Some features are indispensable /This is Why we include them as standard.

A rapid return on your investment

With machines this rugged you'll want to take on as much work as you can find. So it's worth taking the time to consider some of the new capabilities they'll bring to your team.

For a start, you can print and copy on to any size of stock between A5R and SRA3. And you can run coated and uncoated media, right the way up to 300gsm.

Scanning is equally impressive. The Advanced Document Feeder, which comes as standard, can process as many as 200 originals per minute - in full colour - to JPEG, TIFF, XPS, PDF, PDF/A, encrypted PDF or compact PDF formats.

Scans can be sent directly to email recipients, FTP, a network server, your desktop, a USB memory stick or the MFP's internal hard drive. There's even a handy 'Scan to Me' function, which gives you one click scanning directly to your own email address, too.

1 terabyte of storage

Every machine in the range comes with a massive 1TB of storage. Use it to store your scanned documents so that they can be shared, reused and repurposed whenever you need them, or simply held in a secure archive.

You can also add a Disk Mirroring Kit which lets you recover data in the event of a hard disk failure.

FULL COLOUR
NETWORK SCANNING



Every organisation evolves /This is Why our production systems are so versatile.

The MX-M1204, MX-M1054, MX-M904 can keep up with any challenge that comes your way. Take the finishing options, for example. There's a huge range which combine to create fully finished, offset-stacked, customer-ready documents as part of an effortless, single-step process. All you have to do is select the best modules for your business.

There's a family of multi-position stapling and hole punching options, complete with offset stacking to keep your finished documents neatly separated. Plus, we've included an adjustable Curl Correction Unit to ensure flat, easily manageable output across a range of media, and a folding unit for making a variety of documents with 'Z', 'C', 'Accordion', 'Double' and 'Half' folds.

A Post-Process Inserter makes it easy to insert pre-printed covers, inserts and other pages into your print run. And High Capacity Stackers and Paper Carts are available for stacking and transporting up to 5,000 sheets at a time, in readiness for offline finishing and distribution.

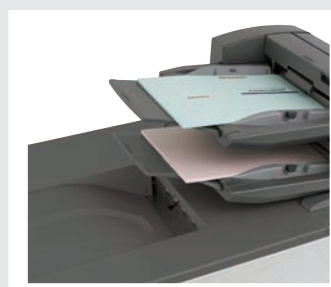
You can create a wide variety of different booklets inline, too. Choose the industry-leading Plockmatic booklet maker for stapled, saddle-stitched and square fold booklets of up to 120 pages – without slowing down the print run - all neatly trimmed for a professional finish.

For extra convenience you can preconfigure tickets for up to 20 jobs and the intuitive user interface gives you precise control over the staple and fold positions.

Add the GBC SmartPunch for one-step automated hole punching. It comes with a high capacity chip tray for fewer interruptions and there's a choice of several replaceable die sets.

It all adds up to a rugged, high performance system with the versatility to tackle any challenge, any day.

EXTENSIVE FINISHING CAPABILITIES



We understand the pressure of deadlines /This is Why we make every job quick and easy.

Instant productivity

If all this sounds rather complicated, relax. We've made it possible to control every major feature - and view all system status alerts - from a large 10.1" colour touch screen control panel which tilts for easy viewing.

But unlike other touch screen systems, ours incorporates finger-swipe technology. So all you have to do is log on to your personalised home screen and then tap, flick or slide your finger for effortless control.

You can even add full internet access. So now your colleagues can browse for and print web content without the need for a PC. What's more, you can add Sharp OSA® to connect to the 'Cloud' and run Software as a Service (SaaS) applications developed by Sharp's Technology Partners.

Thoughtful design

We've paid close attention to operator convenience. An optional retractable QWERTY keyboard makes it easy to add data to your scans.

We added a highly visible status indicator, which displays a red light when operator attention is required. What's more, every important area - including consumables and the paper transport mechanism - is accessible from the front of the MFP for faster, easier intervention.

And we've included our innovative Remote Access Control Panel which lets you view and operate the front panel display from your PC, allowing you to take control, change settings, fix problems and provide ad hoc instruction, without ever leaving your desk.

TILTABLE CONTROL PANEL WITH RETRACTABLE KEYBOARD OPTION



We understand your concern for the environment **/This is Why** our systems consume fewer natural resources.

You might think that machines this powerful must consume a lot of energy and be expensive to run. But the truth is that we've gone to great lengths to make them as environmentally friendly as possible.

For a start, we've used biomass plastic in their construction and we use biomass toner for printing and copying: materials which have a far lower environmental impact than conventional plastic and toner.

A combination of rapid warm up times, an efficient fusing unit, a new low temperature toner formulation, and energy efficient LED lights in the scanner all help to reduce power consumption and running costs.

They also come with an Eco Scan feature, which stops the fuser from being needlessly heated when the MFP is being used only for scanning.

On/off times can be set according to a schedule of your choosing and an Enhanced Auto Power Shut Off feature lets users fine-tune this by specifying particular dates.

Used together or in isolation, each of these features help make the Energy Star-certified MX-M1204, MX-M1054 and MX-M904 some of the most environmentally friendly production class systems you can buy.



Some things can be shared, others can't /This is Why we protect you with multi-layered security.

Hard to beat security

These systems incorporate some of the industry's toughest commercially available security features, including data encryption. Each model has password-controlled access for robust user authentication. Plus, they come with a useful Data Initialisation feature for erasing data from your MFP when the time comes to replace it.

A secure network interface, SSL, IPsec, port-based network protection, and IP / MAC address filtering defend against the most determined attacks.

We guard against accidents, too, with features such as password-protected PDFs, a Hidden Pattern Print feature which can reveal a watermark (e.g. 'CONFIDENTIAL NOT FOR COPY') and Confidential PIN Printing which requires the user to be present at the MFP before the print run can start.

Other security features include the encryption and secure erasure of data on the hard disk, either automatically or on demand.

We can prevent the unauthorized copying, scanning, faxing and filing of confidential documents, too with our Document Control Function*. This adds copy-prevention data to a document when it is first copied or printed. If the data is subsequently detected the MFP simply cancels the job or prints a blank page.

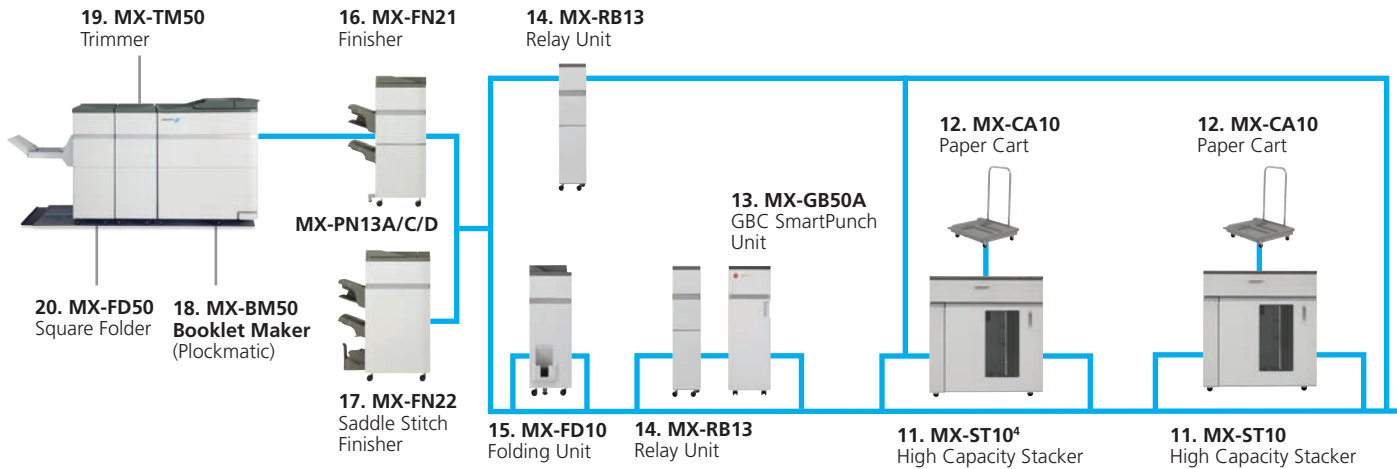
MULTI-LEVEL SECURITY



*Requires Data Security Kit option

Options & Configuration Examples

¹ For MX-M904 only. ² Required if MX-LC13 is installed. ³ Required if 2 x MX-LC13 are installed. ⁴ MX-ST10 can be end of configuration.



MX-M1204/MX-M1054/MX-M904

- A4, A3 and SRA3 paper handling
- 8,500-sheet paper capacity
- 4000-sheet finisher
- 100-sheet stapling
- Status Indicator
- Curl Correction
- Inserter
- GBC SmartPunch
- Plockmatic Booklet Maker
- Inline trimming
- Square folding

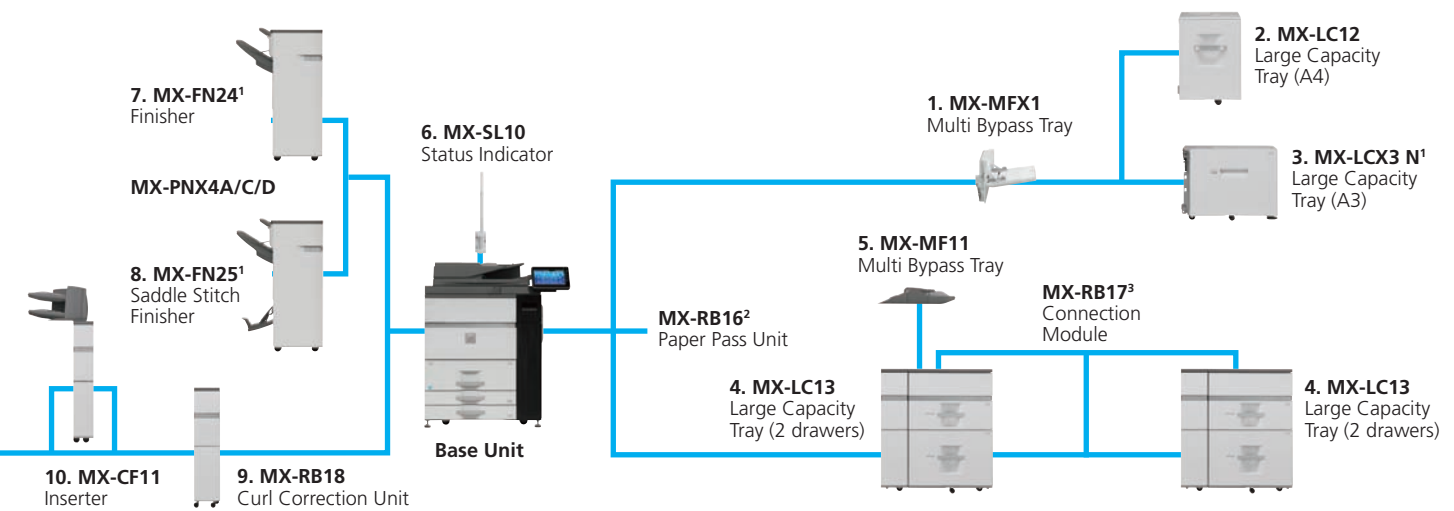


MX-M1204/MX-M1054/MX-M904

- A4, A3 and SRA3 paper handling
- 8,500-sheet paper capacity
- Status indicator
- Curl Correction
- High Capacity Stacker for 5,000 sheets plus cart



Options & Configuration Examples

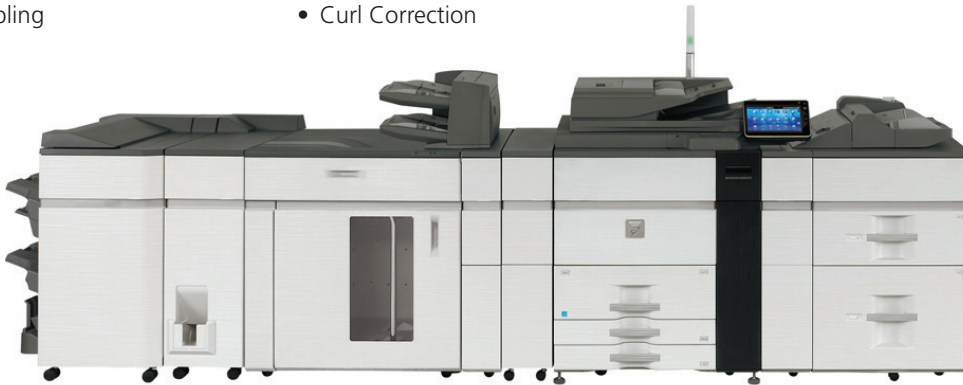


MX-M1204/MX-M1054/MX-M904

- A4, A3 and SRA3 paper handling
- 8,500-sheet paper capacity
- 4,000-sheet finisher
- 100-sheet stapling

- 20-sheet booklets
- Status indicator
- Inline trimming
- Inserter
- Curl Correction

- High Capacity Stacker for 5,000 sheets plus cart
- Various folding options



MX-M1204/MX-M1054/MX-M904

- A4, A3 and SRA3 paper handling
- 13,500-sheet paper capacity
- 4,000-sheet finisher
- 100-sheet stapling

- 20-sheet booklets
- Status indicator
- Inline trimming
- Inserter

- Curl Correction
- High Capacity Stackers for 10,000 sheets plus carts
- Various folding options



Base Unit

MX-KB13 Keyboard

1. MX-MFX1 Multi Bypass Tray

A5R – A3W, 100 sheets (80g/m²)
(for main machine).

2. MX-LC12 Large Capacity Tray (A4)

A4 – B5, 3,500 sheets (80g/m²)
Requires MX-MFX1.

3. MX-LCX3 N Large Capacity Tray (A3)

A3 – A4R, 3,000 sheets (80g/m²)
Requires MX-MFX1.
Not available for MX-M1204 & MX-M1054.

MX-RB16 Paper Pass Unit

Required with MX-LC13.

4. MX-LC13 Large Capacity Tray (2 drawers)

SRA3 – A4R, 2,500 sheets each (80g/m²)

MX-RB17 Connection Module

Required if 2 x MX-LC13 are installed.

5. MX-MF11 Multi Bypass Tray

(for MX-LC13)
SRA3 – A5R, 500 sheets (80g/m²)

6. MX-SL10 Status Indicator

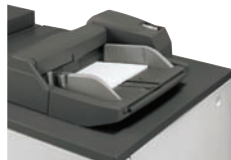
Finishing

7. MX-FN24 Finisher (3k - 50-sheet staple)

A3-B5R (offset/staple), A3W – A5R (non offset)
Offset tray: 3,000 sheets*
Top tray: 250 sheets*
50-sheet* staple capacity
(front, rear or 2 point stitching).
Not available for MX-M1204 & MX-M1054.



Keyboard



Multi Bypass Tray



Finisher



Saddle Stitch Finisher

MX-PNX4A/C/D Punch Module

(for MX-FN24 or MX-FN25)

A: 2 hole punch, C: 4 hole punch, D: 4 hole wide punch.

9. MX-RB18 Curl Correction Unit

Corrects paper curling by putting pressure on the convex/concave curl
Required if MX-FN21 or MX-FN22 is installed.

10. MX-CF11 Inserter (200-sheet x 2 bin)

SRA3 – A5R, 200 sheets each (80g/m²).

11. MX-ST10 High Capacity Stacker

SRA3 - A5R
Paper stacking tray: 5,000 sheets (80g/m²)
Top tray: 250 sheets (80g/m²).

12. MX-CA10 Paper Cart

Included with MX-ST10.
For easy transport of finished document to another place.

13. MX-GB50A GBC SmartPunch Unit

Paper Size: A4
Paper Weight: 75-216 g/m²
MX-GBX12 12 Hole VeloBind
MX-GBX20 20 Hole Plastic Comb
MX-GBX21 21 Hole Plastic Comb
MX-GBX23 23 Hole Wire
MX-GBX34 34 Hole Wire
MX-GBX47 47 Hole Color Coil
MX-GBX34PR 34 Hole ProClick
MX-GBX2H65 2 Hole 6.5mm Pin
MX-GBX4H65 4 Hole 6.5mm Pin
MX-GBX2H80 2 Hole 8mm Pin
MX-GBX4H80 4 Hole 8mm Pin
MX-GB54 19 Hole Plastic Comb
MX-GB55 34 Hole Wire
MX-GB56 4 Hole 8mm Pin



CombBind®



WireBind



ProClick®



Color Coil®



2 hole



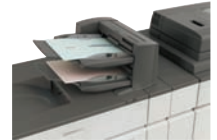
VeloBind®

Requires MX-RB13 and either MX-FN21 or MX-FN22

14. MX-RB13 Relay Unit

15. MX-FD10 Folding Unit

Folding options include Z, C, accordion, double and half folds.



Inserter



Stacker



Folding Unit

16. MX-FN21 Finisher (4k - 100-sheet staple)

A3 - B5 (offset/staple), SRA3 - A5R (non offset)

Upper tray: 1,500 sheets*

Middle tray: 250 sheets*

Lower tray: 2,500 sheets*

100-sheet* staple capacity
(front, rear or 2 point stitching)

Finisher

17. MX-FN22 Saddle Stitch Finisher

(4k - 100-sheet staple)

A3 - B5 (offset/staple), SRA3 - A5R (non offset)

Upper tray: 1,500 sheets*

Middle tray: 250 sheets*

Lower tray: 2,500 sheets*

100-sheet* staple capacity
(front, rear or 2 point stitching)Saddle stitch tray: 5 sets (16-20 sheets),
10 sets (11-15 sheets), 15 sets (6-10 sheets),
25 sets (1-5 sheets). Max 20 sheets per set.

Saddle Stitch Finisher

MX-PN13A/C/D Punch Module (for MX-FN21 or MX-FN22)

A: 2 hole punch, C: 2/4 hole punch, D: 4 hole wide punch

MX-TM10 Trimming Module (for MX-FN22)Up to 20 mm trim width, 1,500 sheets (80 g/m²)**18. MX-BM50 Booklet Maker** (Plockmatic)

A4, A3, SRA3

Paper size: 206 x 275 mm (Min) to 320 x 457.2 mm (Max)

Paper Weight: 64-300 g/m²

Capacity: 1-30 sheets* (stapled and folded);

1-6 sheets* (non-stapled and folded)

19. MX-TM50 Trimmer (for Plockmatic)

Trim Length: 1-16 mm, Default: 4.5mm

20. MX-FD50 Square Folder (for Plockmatic)

A4, A3, SRA3

Paper size: 206 x 275 mm (Min) to 320 x 457.2 mm (Max)

Paper Weight: 64-300 g/m²

Capacity: 1-30 sheets* (stapled and folded)

MX-CF50 Cover Feeder (for Plockmatic)Paper Weight: 70-250 g/m²

Capacity: 20mm (approx. 200 sheets of 80gsm paper)

MX-XB50 Rail Unit**Faxing****MX-FWX1 Internet-Fax Expansion Kit****MX-FX11 Fax Expansion Kit**

Super G3 fax module.

Connectivity**Printing****MX-PF10 Barcode Font Kit**

Enables barcode printing.

MX-PUX1 XPS Expansion Kit

Enables XPS printing.

MX-AM10 Web Browsing Expansion Kit

Enables Internet browsing and printing from the control panel.

Scanning**AR-SU1 Stamp Unit**

Marks already scanned documents for checking.

MX-EB11 Enhanced Compression Kit

Enables creation of high compression PDFs.

Sharpdesk Licenses**MX-USX1/X5/10/50/A0**

1/5/10/50/100-License Kit

Sharp OSA®**MX-AMX1 Application Integration Module****MX-AMX2 Application Communication Module****MX-AMX3 External Account Module****Security****MX-FR38U Data Security Kit** (non CC version)**MX-EB15 Mirroring Kit**

Second hard drive enables data backup of files stored on HDD.

* A4 or smaller, 80 g/m².

Specifications

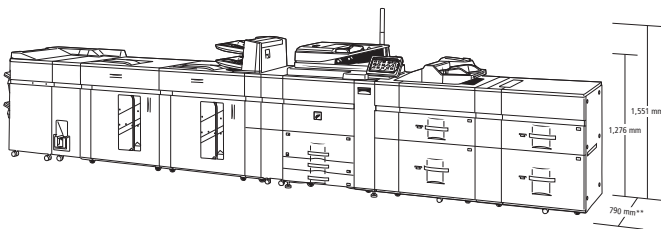
General

Engine speed (ppm/cpm) (Max)		
	A4	A3
MX-M1204	120	54
MX-M1054	105	52
MX-M904	90	47
Paper size (Min – Max)		
Drawer 1 & 2	A4	
Drawer 3	A4R - A3W	
Drawer 4	A5R - A3W	
Multi bypass	A5R - A3W	
Paper weight (g/m ²)		
Drawer 1 & 2	60 - 105	
Drawer 3 & 4	60 - 220	
Multi bypass	52 - 300	
Paper capacity (Std – Max)		
Sheets	3,100 – 13,500	
Drawers	4 – 8 (plus multi bypass tray)	
Warm-up time *1 (seconds)		
210 or less		
Duplex		
Std		
Memory		
Copier/Printer (shared)	5 GB	
HDD	1 TB	
Power requirements		
Rated local AC voltage ±10%, 50/60 Hz		
Power consumption kW (Max)		
MX-M1204	2.99	
MX-M1054	2.99	
MX-M904	2.76	
Dimensions (mm) (W x D x H)		
1,084 x 790 x 1,237		
Weight (kg)		
295		

Network Printer

Resolution (dpi)		1200 x 1200, 600 x 600
Interface		USB2.0, 10Base-T / 100Base-TX / 1000Base-T
Supported OS		Windows® XP, Windows Server® 2003/2008/2008R2/2012, Windows Vista®, Windows® 7, Windows® 8 Mac OS X 10.4, 10.5, 10.6, 10.7, 10.8
Network protocols		TCP/IP (IPv4 & IPv6), IPX/SPX (Netware), EtherTalk (AppleTalk)
Printing protocols		LPR, Raw TCP (port 9100), POP3 (e-mail printing), HTTP, Novell PrinterServer application with NDS and Bindery, FTP for downloading print files, EtherTalk printing, IPP
PDL emulation	Std Opt	PCL6, Adobe® PostScript® 3™ XPS*3
Available fonts		
PCL	80	
Adobe® PostScript® 3™	136	

External Dimensions



Refer to install planning guide for option lengths.

Copier

Original paper size (Max)	A3
First copy time *2 (seconds)	
MX-M1204	3.2
MX-M1054	3.2
MX-M904	4.0
Continuous copies (Max)	9,999
Resolution (dpi)	1200 x 1200, 600 x 600
Gradation levels	256
Zoom range (%)	25 – 400 (25 – 200 using DSPP) in 1% increments
Pre-set copy ratios	10 (SR/5E)

Colour Network Scanner

Scan method	Push scan (via operation panel) Pull scan (TWAIN compliant application)
Resolution (dpi)	
Push scan	100, 150, 200, 300, 400, 600
Pull scan	75, 100, 150, 200, 300, 400, 600 50 - 9,600 via user setting
File formats	XPS*4, PDF, Encrypted PDF, Compact PDF*5, PDF/A-1b, JPEG (colour only), TIFF
Scan destinations	Scan to e-mail, desktop, FTP server, network folder (SMB), USB memory, fax*6, i-fax*7
Scanner utilities	Sharpdesk, Sharpdesk Mobile, Sharp Network Scanner Tool

Document Filing

Document filing capacity (pages/or files)	
Main folder & Custom Folder	35,000*8 or 5,000
Quick file folder	10,000*8 or 1,000
Stored jobs	Copy, print, scan, fax transmission*6
Storage folders	Quick folder, main folder, custom folder (max.1,000)
Confidential storage	Password protection

Fax (requires optional MX-FX11)

Compression method	MH/MR/MMR/JBIG
Communication protocol	Super G3
Transmission time *9 (seconds)	Less than 3
Modem speed (bps)	33,600 – 2,400 with automatic fallback
Transmission resolution (dpi)	
Std	203.2 x 97.8
Ultra Fine	406.4 x 391
Recording width	A5 – A3
Memory (GB) (Min - Max)	1
Grey scale levels	256

Notes

*1 At rated voltage. May vary depending on machine conditions and operating environment. *2 Best achieved time based on A4 copy, long-edge feeding from 1st paper drawer, using document glass, when machine is ready. May vary depending on machine conditions and operating environment. *3 Requires optional MX-PLUX1. *4 To view XPS files on PCs not running Windows Vista, you must have the XPS View application installed. *5 Requires optional MX-EB11. *6 Requires optional MX-FX11. *7 Requires optional MX-FWX1. *8 Measured using Sharps' standard chart (A4 with 6% coverage, B/W). The storage capacity will be less for colour pages. *9 Based on Sharp's standard chart with approx. 700 characters (A4 portrait) at standard resolution in Super G3 mode, 33,600 bps, JBIG compression.

Design and specifications are subject to change without prior notice. All information was correct at time of print. The ENERGY STAR logo is a certification mark and may only be used to certify specific products that have been determined to meet the ENERGY STAR programme requirements. ENERGY STAR is a US registered mark. Windows, Windows XP, Windows Server and Windows Vista are registered trademarks of Microsoft Corporation. All other company names, product names, and logos are trademarks or registered trademarks of their respective owners. ©Sharp Corporation December 2012

Ref: Brochure MX-M1204/MX-M1054/MX-M904. All trademarks acknowledged. E&OE.

This is Why

www.sharp.co.uk

SHARP

DEALER STAMP

SHARP ELECTRONICS (UK) LTD
4 FURZEGROUND WAY
STOCKLEY PARK, UXBRIDGE
MIDDLESEX UB11 1EZ
TEL: 0800 138 5051
ROI: (+353) (0) 20 8734 2000

